

Norwegian Mitts

from

Needlewoman and Needlecraft No. 53,

January 1953

MATERIALS.—2 ozs. Lyric 3-ply Wool (1 oz. Dark, 1 oz. Light). A pair of No. 12 knitting needles.

MEASUREMENTS.—To fit 6½ to 6¾ ins. hand. Length 10½ ins. Length from ribbing at wrist to top 7½ ins.

TENSION.—10 sts. to 1 inch measured over Fair Isle (unpressed).

N.B.—When working the fair isle pattern the wools should be loosely twisted at the back of the work after each stitch to retain the elasticity and give a neat finish on the wrong side.

RIGHT HAND.—Cast on 68 sts. with D. wool.

1st row.—K. 3, * P. 2, K. 2 ; rep. from * to last st. K. 1.
2nd row.—K. 1, * P. 2, K. 2 ; rep. from * to last 3 sts. P. 2, K. 1.

Rep. 1st and 2nd rows for 3 ins. ending with 2nd row.

Next row.—K. 1, P. 2, * inc. in next st. purlwise, P. 11 ; rep. from * to last 5 sts. inc. in next st. purlwise, P. 3, K. 1. (74 sts.) **

Join in L. wool.

1st row.—K. 1L, (1D. 7L. 1D. 4L.) twice, 1D. 7L. 1D. 2L. 1D. 5L. (3D. 7L.) twice, 3D. 5L. 1D. 1L.

2nd row.—K. 1L. P. 1D. 4L. (2D. 1L. 2D. 5L.) twice, 2D. 1L. 2D. 4L. 1D. 2L. 1D. 6L. 3D. 3L. 2D. 5L. 2D. 3L. 3D. 6L. 1D. K. 1L.

Work from 3rd to 28th row of chart given on page 18.

TO WORK THUMB.

29th row.—K. 1L. 1D. 10L. 1D. 1L. 4D. 1L. 4D. 1L. 1D. 10L. 1D. 2L. 4D. 7L. 1D., turn.

30th row.—K. 1L. P. 8L. 1D. 1L. 1D. 1L. break off D. wool, cast on 13 sts. in L. turn.

Join in D. wool and work on these 26 sts. as follows :—

1st row.—K. 1D. 7L. 4D. 2L. 4D. 7L. 1D.

2nd row.—K. 1D. P. 1D. 5L. 2D. 2L. 1D. 2L. 1D. 2L. 2D. 5L. 1D. K. 1D.

Rep. from 3rd to 22nd row of chart for Thumb.

To Shape Top.

1st row.—(K. 2 tog. L., K. 1L.) twice, K. 2 tog. L. K. 1D. K. 2 tog. D. K. 1D. K. 2 tog. L. K. 1D. K. 2 tog. D. K. 1D. (K. 2 tog. L. K. 1L.) twice, K. 2 tog. L.

2nd row.—K. 1L. P. 5L. 2D. 1L. 2D. 5L. K. 1L. break off D. wool.

3rd row.—(K. 2 tog.) 4 times, K. 1, (K. 2 tog.) 4 times, in L. Break off wool and run end through remaining sts., draw up and fasten off securely.

Using right hand needle, with right side of work facing join in L. wool and knit up 13 sts. from 13 cast on sts. at base of Thumb, join in D. wool and working across the 24 sts. which were left, K. 2D. 7L. 3D. 7L. 4D. 1L.

Next row.—K. 1L. P. 1D. 1L. 1D. (9L. 1D.) 3 times, 1L. 1D. 2L. 1D. 11L. 5D. 1L. 5D. 11L. 1D. K. 1L.

Work from 31st to 58th row of chart.

To Shape Top.

59th row.—K. 1L. 1D. K. 2 tog. L. 13L. 1D. 1L. 1D. 13L. K. 2 tog. L. 1D. 2L. 1D. K. 2 tog. L. 3L. (3D. 7L.) twice, 3D. 3L. K. 2 tog. L. 1D. 1L.

60th row.—K. 1L. P. 1D. 5L. (1D. 9L.) twice, 1D. 5L. 1D. 2L. 1D. 10L. 4D. 1L. 1D. 1L. 4D. 10L. 1D. K. 1L.

61st row.—K. 1L. 1D. K. 2 tog. L. 7L. 4D. (1L. 1D.) twice, 1L. 4D. 7L. K. 2 tog. L. 1D. 2L. 1D. K. 2 tog. L. 2L. (3D. 7L.) twice, 3D. 2L. K. 2 tog. L. 1D. 1L.

62nd row.—K. 1L. P. 1D. 2L. (2D. 1L. 2D. 5L.) twice, 2D. 1L. 2D. 2L. 1D. 2L. 1D. 7L. 4D. (1L. 2D.) twice, 1L. 4D. 7L. 1D. K. 1L.

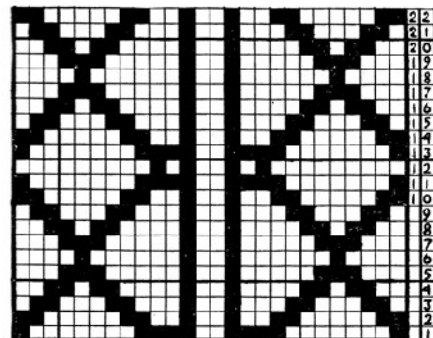
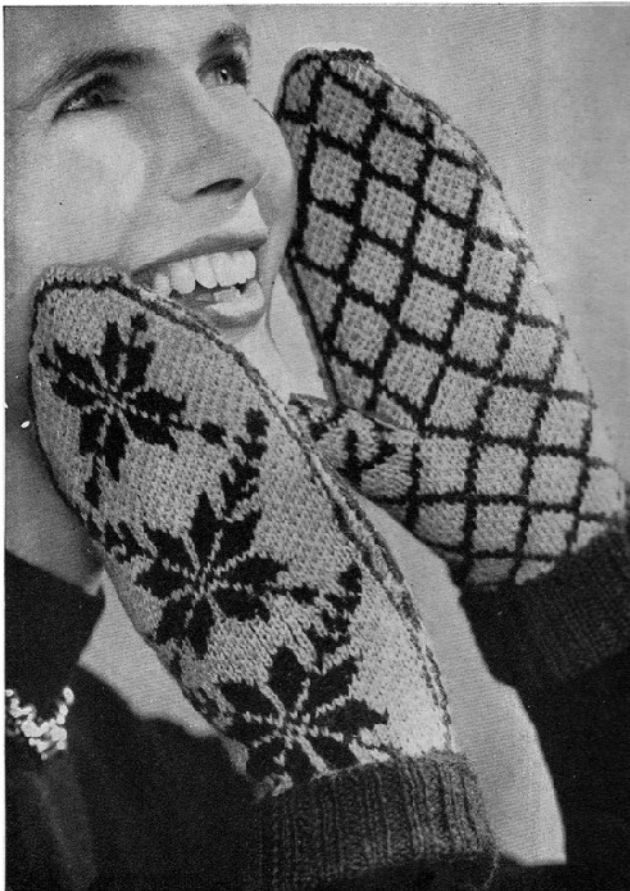


Chart of Thumb

63rd row.—K. 1L. 1D. K. 2 tog. L. 4L. 4D. (1L. 3D.) twice, 1L. 4D. 4L. K. 2 tog. L. 1D. 2L. 1D. K. 2 tog. D. 1D. (3L. 2D.) 4 times, 3L. 1D. K. 2 tog. D. 1D. 1L.

64th row.—K. 1L. P. 2D. (5L. 2D. 1L. 2D.) twice, 5L. 2D. 2L. 1D. 8L. 5D. 1L. 5D. 8L. 1D. K. 1L.

65th row.—K. 1L. 1D. K. 2 tog. L. 5L. 1D. 1L. 3D. 3L. 3D. 1L. 1D. 5L. K. 2 tog. L. 1D. 2L. 1D. K. 2 tog. L. 5L. 3D. 7L. 3D. 5L. K. 2 tog. L. 1D. 1L.

66th row.—K. 1L. P. 1D. P. 2 tog. L. 5L. 1D. 9L. 1D. 5L. P. 2 tog. L. 1D. 2L. 1D. P. 2 tog. L. (2L. 2D.) twice, 5L. (2D. 2L.) twice, P. 2 tog. L. 1D. K. 1L.

67th row.—K. 1L. 1D. K. 2 tog. L. 1L. 2D. 2L. 1D. 7L. 1D. 2L. 2D. 1L. K. 2 tog. L. 1D. 2L. 1D. K. 2 tog. L. 3L. 3D. 7L. 3D. 3L. K. 2 tog. L. 1D. 1L.

68th row.—K. 1L. P. 1D. P. 2 tog. L. 1L. 2D. 1L. 2D. 5L. 2D. 1L. 2D. 1L. P. 2 tog. L. 1D. 2L. 1D. P. 2 tog. L. 17L. P. 2 tog. L. 1D. K. 1L.

69th row.—K. 1L. 1D. K. 2 tog. L. 15L. K. 2 tog. L. 1D. 2L. 1D. K. 2 tog. D. 1D. (3L. 2D.) twice, 3L. 1D. K. 2 tog. D. 1D. 1L.

70th row.—K. 1L. P. 1D. P. 2 tog. L. 4L. 2D. 1L. 2D. 4L. P. 2 tog. L. 1D. 2L. 1D. P. 2 tog. L. 13L. P. 2 tog. L. 1D. K. 1L.

71st row.—K. 1L. 1D. K. 2 tog. L. 11L. K. 2 tog. L. 1D. 2L. 1D. K. 2 tog. L. 4L. 3D. 4L. K. 2 tog. L. 1D. 1L.

72nd row.—K. 1L. P. 1D. P. 2 tog. L. 4L. 1D. 4L. P. 2 tog. L. 1D. 2L. 1D. P. 2 tog. L. 9L. P. 2 tog. L. 1D. K. 1L.

73rd row.—K. 1L. 1D. K. 2 tog. D. 7D. K. 2 tog. D. 1D. 2L. 1D. K. 2 tog. D. 7D. K. 2 tog. D. 1D. 1L. break off D. wool.

74th row.—K. 1, P. 1, P. 2 tog. P. 5, P. 2 tog. P. 4, P. 2 tog. P. 5, P. 2 tog. P. 1, K. 1 in L. Cast off or (knit 11, fold work in half and graft sts.).

LEFT HAND.—Work as for Right Hand mitten as far as **. Join in L. wool and work 1st and 2nd rows of Fair Isle as given for Right Hand working each row backwards.

Work from 3rd to 28th row of chart working each row backwards.

29th row.—K. 1L. 4D. (7L. 3D.) twice, 7L. 4D. 1L. cast on 13 sts. in L. turn, break off D. wool.

Join in D. wool.

30th row.—K. 1L. P. 1D. 9L. 1D. 2L. 1D. 1L. 1D. 8L. K. 1L. turn.

THE THUMB.—Work on these 26 sts. exactly as for Thumb of right hand.

Using right hand needle with right side of work facing join in L. wool and knit up 13 sts. from 13 cast on sts. at base of thumb, join in D. wool and working across the 37 sts. which were left, K. 1L. 1D. 10L. 1D. 1L. 4D. 1L. 4D. 1L. 1D. 10L. 1D. 1L.

Next row.—K. 1L. P. 1D. 11L. 5D. 1L. 5D. 11L. 1D. 2L. 1D. 1L. (1D. 9L.) 3 times, 1D. 1L. 1D. K. 1L.

Work from 31st to 58th row of chart working each row backwards.

To Shape Top.—Work as for top of right hand working each row backwards.

TO MAKE UP.—Press with a hot iron over a damp cloth. Sew up seams.

